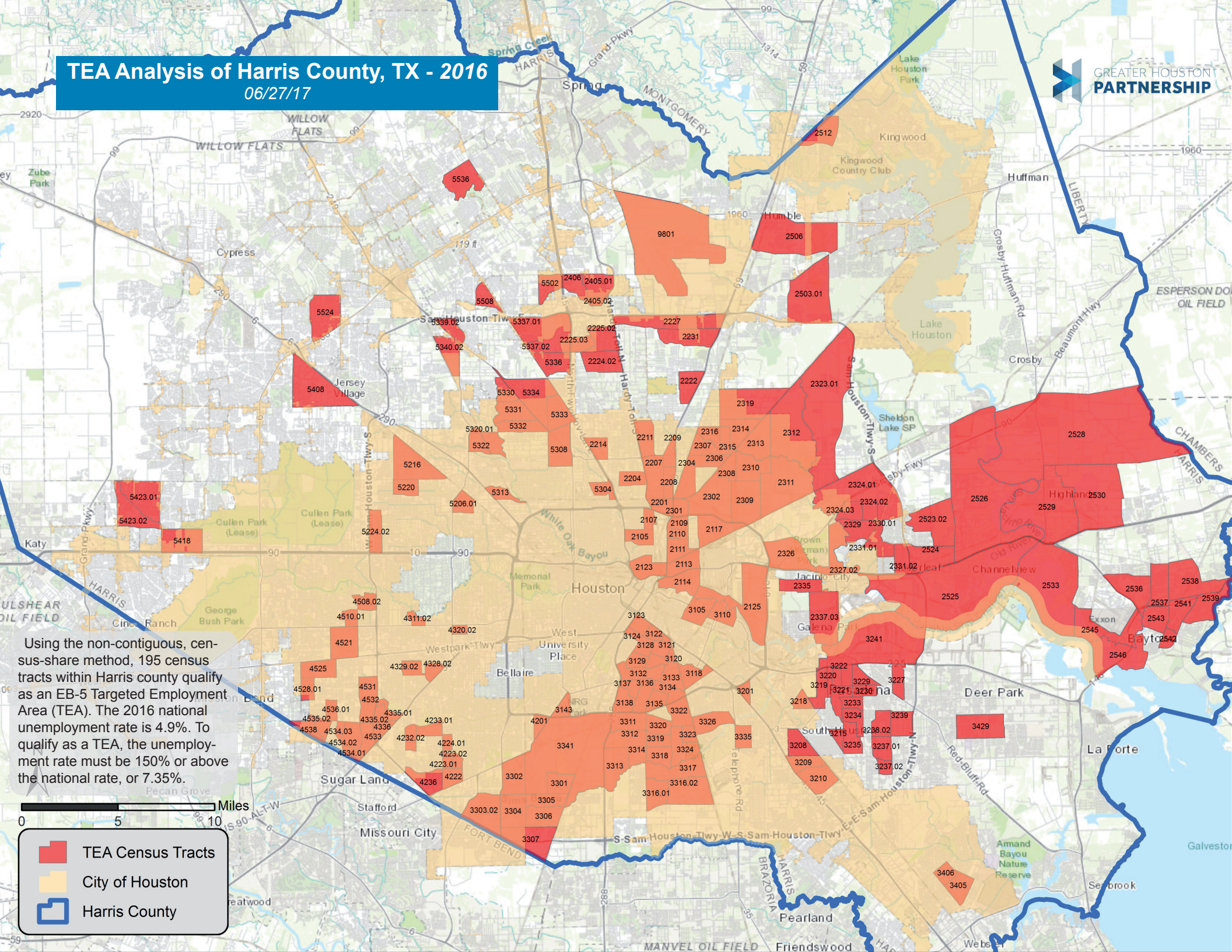


TEA Analysis of Harris County, TX - 2016

06/27/17



Using the non-contiguous, census-share method, 195 census tracts within Harris county qualify as an EB-5 Targeted Employment Area (TEA). The 2016 national unemployment rate is 4.9%. To qualify as a TEA, the unemployment rate must be 150% or above the national rate, or 7.35%.

0 5 10 Miles

- TEA Census Tracts
- City of Houston
- Harris County