

Harris County Juvenile Probation Department

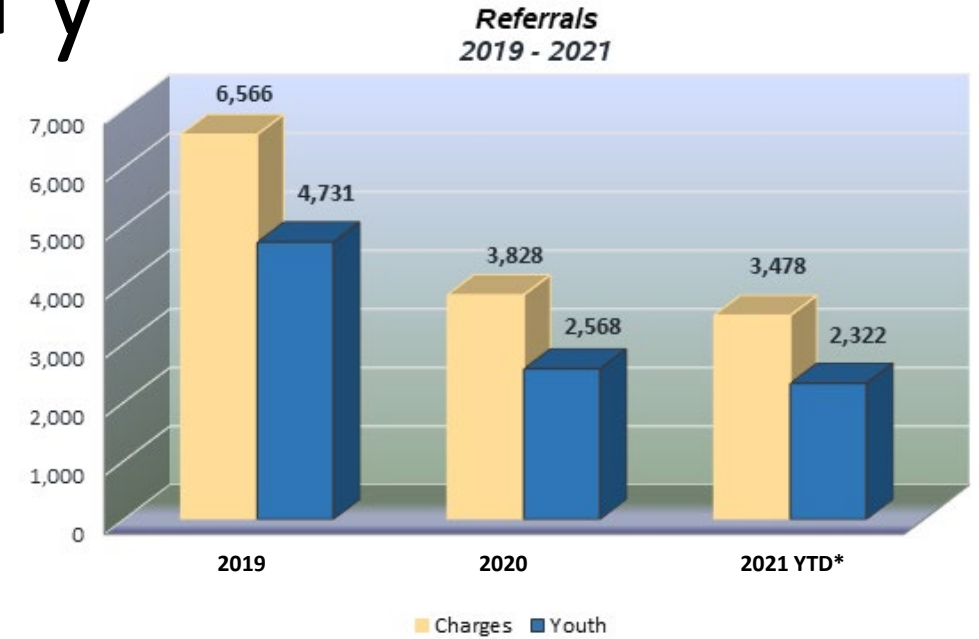
BUDGET PRESENTATION FY 22-23



2021 Activity Summary

<i>Youth Admitted to Detention*</i>			
	2019	2020	2021 YTD*
Detention Center	2734	1598	1062
Harris County Psychiatric	100	91	83

*YTD = through December 19th



Offense Type

	Jan	Feb	Mar	Apr	May	Jun	Jul	Aug	Sep	Oct	Nov	Dec	TOTAL	% TOTAL
Person (Felony)*	61	64	59	100	80	78	79	85	86	52	47	46	837	24.1%
Person (Misdemeanor)	37	36	47	51	44	23	22	36	63	75	94	36	564	16.2%
Property (Felony)*	41	35	40	45	39	32	35	28	34	34	39	24	426	12.2%
Property (Misdemeanor)	12	31	35	18	30	20	38	20	27	19	28	25	303	8.7%
Illegal Substance	11	5	11	14	12	4	5	6	12	12	12	9	113	3.2%
All Others	94	107	111	93	103	79	55	80	93	124	119	96	1154	33.2%
Violations of Probation (VOP)-Technical	5	1	6	12	8	6	4	10	10	3	12	4	81	2.3%
TOTAL	261	279	309	333	316	242	238	265	325	319	351	240	3478	100.0%



Programs and Services

- **Administration and Support Services**

- Data Analytics
- Director's Office
- Financial Services
- General Counsel
- Human Resources
- IT Services
- Operational Support
- Strategic Initiatives

- **Community-Based Diversion and Intervention**

- Community-Based Diversion Programs

- **Court Involved Youth Services**

- Court Services
- Detention Alternative Programs
- Intake Services
- Placement Assessment

- **Education Services**

- Education Advocacy
- Excel Academy Charter School
- Excel Academy Juvenile Justice Alternative Education Program

- **Field Services**

- Community Service Project Placement
- Field Supervision

- **Health Services**

- Community-Based Mental Health Services
- Forensic Services
- Residential Medical Services
- Residential Mental Health Services
- Specialized Clinical Intervention

- **Residential Services**

- Behavioral Intervention Support
- Post-Adjudication Facilities
- Pre-Adjudication Facilities

MISSION

The Harris County Juvenile Probation Department is Committed to the protection of the public utilizing intervention strategies that are community-based, family-oriented, and least restrictive while emphasizing responsibility and accountability of both parent and child.



Objectives and Priority Outcomes

KEY DEPARTMENT OBJECTIVES

GOAL

PRIORITY OUTCOME

Justice and Safety

Lessen Exposure to the Juvenile Justice system

- Increase the number of diversion strategies and community supports to reduce system involvement
- Utilize community based alternatives to prevent youth from violating their probation, resulting in detention
- Increase the use of detention alternatives
- Collaboration with outside entities for community based mental health services
- Expand educational opportunities for justice system involved youth

Reduce Violent Crime

- Utilize a Credible Messenger model/approach
- Enhance our current evidence based serious offender program at the Harris County Leadership Academy
- Expand our current community-based serious offender program as an alternative to placement



Accomplishments/Challenges

ACCOMPLISHMENTS

- Implementation of a new Detention Screening Instrument.
- Created a public facing dashboard to promote transparency and accountability.
- Expansion of vocational opportunities at the Education Transition Center.
- Implementation of Opportunity Based Probation, which is an accomplishment/incentive focused supervision approach.
- Expansion of community based mental health services to including Multi-Systemic Therapy (MST) and transitional services.
- Expanded therapeutic approaches to include trauma informed care, Trust Based Relational Intervention (TBRI) training, clinical directors, restorative justice, and serious offender programming.
- Created an Equity team and Juvenile Detention Alternatives Initiative (JDAI) steering committee.
- Increased availability of community-based supports and services.
- Completed facility renovations at all three facilities.

CHALLENGES

- Department wide COVID impact.
- Detention facility is not conducive to providing therapeutic and educational needs for youth.
- Staff retention and recruitment.
- Need for a diversion center to provide an alternative to detention for youth who are not appropriate for detention.
- Placement options for dual status youth.

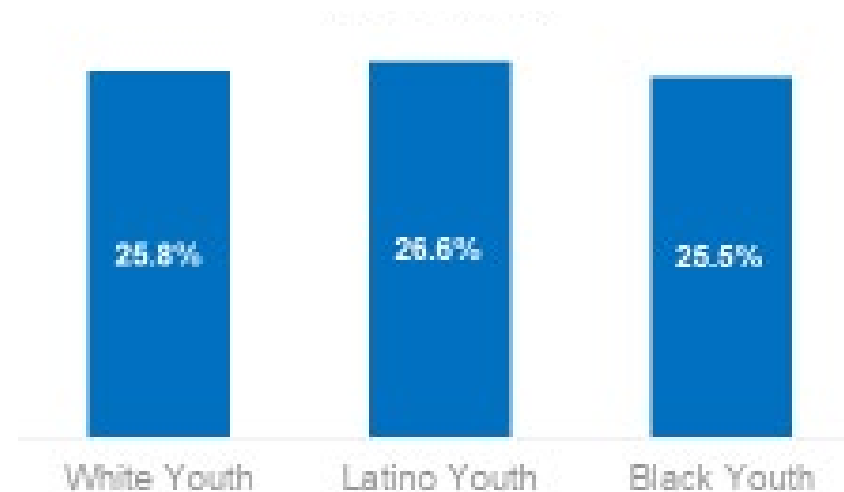


Detention Screening Instrument

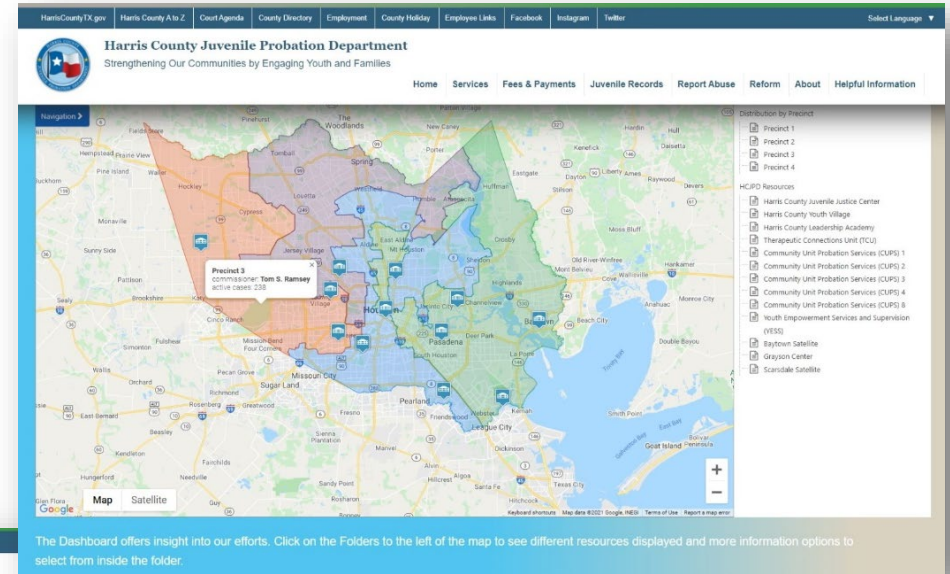
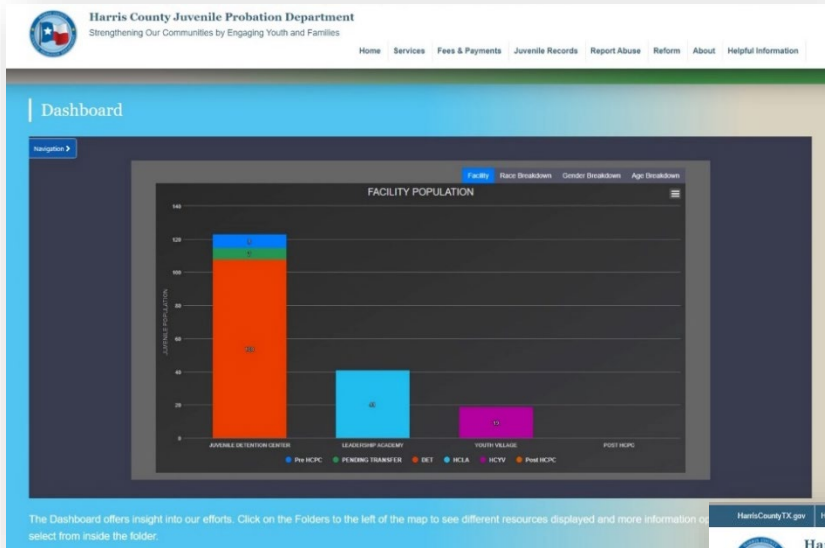
Under the former DSI, Black and Latino youth in 2019 were at least 20% more likely to be screened as eligible for detention, compared to White youth.

The current DSI eliminates that disparity

Current DSI: Odds of being screened as Eligible for Detention, by race/ethnicity



Transparency: Public Facing Dashboard



Facility Renovations

Youth Village



Facility Renovations

Leadership Academy (Current)



Detention Center (Rendering)



Department Performance Measures

Overall Recidivism

For those who completed probation in 2020

Successful Diversion

Reliance on Residential Placement

Detention population from an equity lens

- Recidivism rate of 2021 was 22%, compared to 25% in 2020
- 90.3% of the youth that participated in formal diversion programs were successfully diverted in 2021, compared to 92% the prior year. In 2020, the offenses eligible for diversion expanded to include higher level, nonviolent offenses.
- 89.9% of youth were diverted from detention in 2021, compared to 87% in 2020.
- In 2021, 18.8% of all dispositions resulted in residential placement. With increased dockets, we will aim to reduce that amount to 15%.
- In 2021, the proportion of Hispanic youth in detention was 41.8%, which is lower than the proportion of Hispanic youth in Harris County. Whereas the proportion of Black youth in Harris county was 18%, the proportion of Black youth in detention in 2021 was 50.5%. *(Based on data from the Texas Demographic Center)*

